

Specifications



Wind-Free™ 1-Way Cassette

- 2-Step Cooling – Fast Cooling & Wind-Free™ Cooling.
- Blade angle between 37° and 87°, Blade width 100mm.
- Built-in humidity sensor.

- Height of only 135 mm.
- Built-in condensation drain pump (750 mmH2O).

Indoor Unit			AJ026RB1DEG/EU	AJ035RB1DEG/EU
Capacity				
	Cooling	kW	2.6	3.5
	Heating up to +7°C	kW	2.9	3.8
Performance				
AirFlow Rate		m ³ /min	6.2 / 5.2 / 4.2	7.6 / 6.6 / 5.6
Sound Power	Cooling	dB(A)	50	55
Sound Pressure	Low/High	dB(A)	26/29/32	30/33/37
Electrical Data				
Power Source		V/Hz/Φ	220~240/ 50/1/2	220~240/ 50/1/2
Power consumption	Cooling	W	45	50
	Heating	W	45	50
Current Input	Cooling	A	0.23	0.25
	Heating	A	0.23	0.25
Dimensions				
Net Dimensions (W x H x D)		mm	970 x 135 x 410	970 x 135 x 410
Net Weight		kg	10.0	10.0
Refrigerant				
Piping Connections	Liquid Pipe	Φ.inch	1/4"	1/4"
	Gas Pipe	Φ.inch	3/8"	3/8"
Piping Connections	Drain Pipe	Φ.mm	VP20 (OD 26.ID 20)	VP20 (OD 26.ID 20)
Others				
Panel	Model code		PC1NWFMAN	PC1NWFMAN
	Net Dimensions (W x H x D)	mm	1198 x 35 x 500	1198 x 35 x 500
	Net Weight	kg	4.3	4.3
Accessories	Drain pump		included	included
	Max lifting height/ displacement	mm/ L/ h	750 / 24	750 / 24

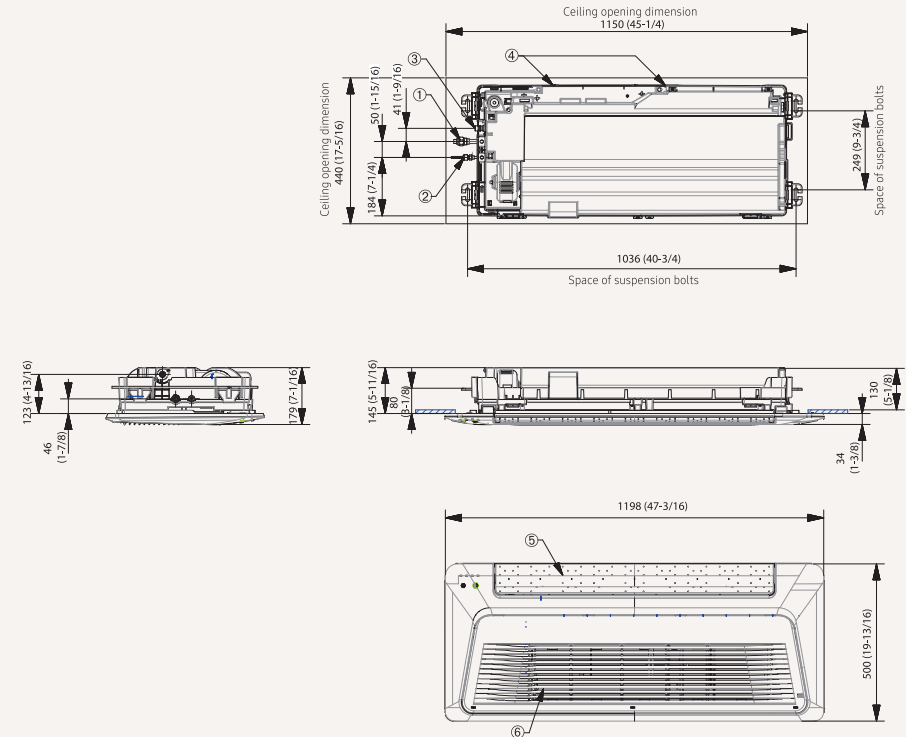
Accessories

Included	Optional	Required
		
Wireless Remote Controller	MWR-WE13	PC1NWFMAN

Dimensional Drawings

Wind-Free™ 1-Way Cassette

AJ026/035RB1DEG/EU



No	Name	Description
1	Gas pipe connection	Ø12.7 (1/2")
2	Liquid pipe connection	Ø6.35 (1/4")
3	Drain hose connection	VP20 (OD26, ID20)
4	Power supply/Communication wiring conduit	
5	Air outlet louver	
6	Air inlet grille	